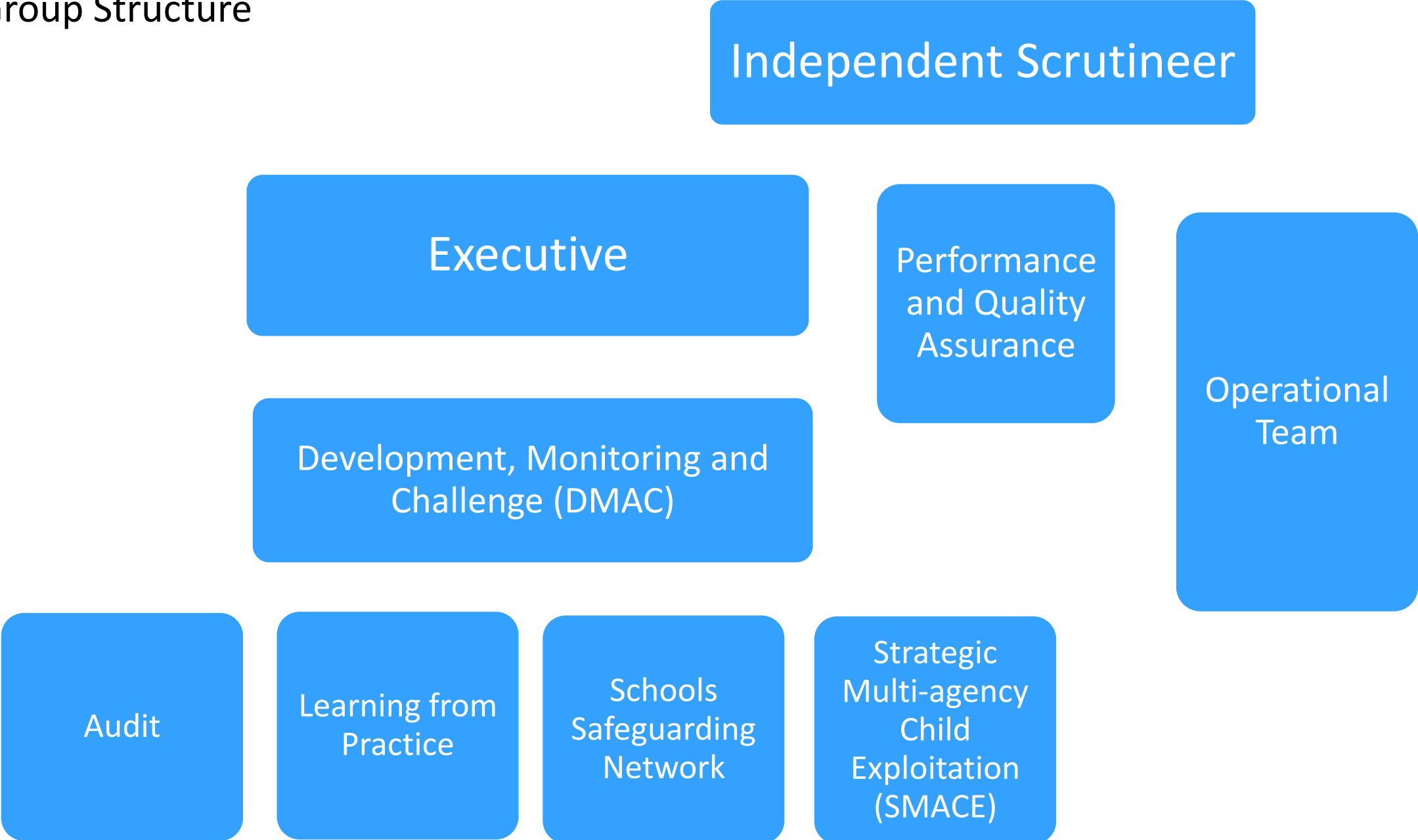


GSCP Group Structure



Key functions & Purpose

Executive

- The Executive Partnership comprises the named lead representatives and a senior advisor for each of the safeguarding partners.
- The key role and functions are assessment of need, contribution to the shaping and implementation of strategy, planning and delivery

DMAC

- The Development, Monitoring and Challenge Partnership brings together the named lead representatives for the safeguarding partner organisations with senior officers in partner organisations and relevant agencies to have oversight of the multi-agency safeguarding arrangements in Greenwich and support decision making regarding local implementation.
- The key role and functions are assessment of need, contribution to the shaping and implementation of strategy, planning and delivery.

Performance and Quality Assurance (PQA)

- The Performance and Quality assurance group is a new group to the partnership established in 2021. This group is chaired by the Independent Scrutineer and looks at the data, reports and action logs from all of the working groups and sets to hold partners to account and provide healthy challenge at a more operational level than the DMAC.
- The main purpose of this is to have promote better accountability across all organizations within the partnership and ensure that changes and activities carried out are effective and in keeping with our priorities.

Key functions & Purpose

Audit

- The Audit Group organises and implements audit exercises including case audits, interviews with children, young people, parents and carers; surveys, consultations and discussions with practitioners.
- These multi agency audits help to measure the quality, effectiveness and outcomes of safeguarding work across the Partnership. The Group triangulates information obtained from these audits to improve the quality of safeguarding delivery to identify areas that require further development and influence system change

Learning from Practice

- The Learning from Practice Group is part of the Greenwich Safeguarding Children Partnership commitment to a dynamic and self-improving system where excellent practice is the norm.
- It has responsibility for identifying and reviewing incidents that raise issues of improvements to practice and commissioning and publishing local child safeguarding practice reviews. It has a key role to play in improving collective knowledge about where there is good practice and also where there are systemic issues and how policy and practice might change to address them.

Schools Safeguarding Network

- The purpose of the Schools' Safeguarding Network is to communicate the need to safeguard and promote the welfare of children to all schools within the Royal Borough of Greenwich.
- The Schools' Safeguarding Network will assist the Greenwich Safeguarding Children Partnership (GSCP) to perform its duties in safeguarding children by monitoring safeguarding activities across the clusters to improve outcomes for children.
- It provides a communication channel between all schools and the GSCP, for information sharing amongst the schools and a source of peer support in meeting safeguarding responsibilities.

SMACE

- The Strategic Multi Agency Child Exploitation Group (SMACE) is a partnership group which is responsible for working collaboratively to ensure a strategic response to child exploitation including child sexual exploitation, criminal exploitation, missing, county lines, gangs and modern day slavery.
- Across the multi-agency partnership, the risk to young people of child sexual exploitation, children associated with gangs and at risk of exploitation and missing from home, care or education is consistently understood, recognised and responded to.

Key functions & Purpose

Independent Scrutineer

- Provide assurance in judging the effectiveness of services to protect children
- Support the Greenwich Safeguarding Children Partnership to be a learning organisation
- Provide assurance in judging the effectiveness of multi-agency arrangements to safeguard and promote the welfare of all children Greenwich
- Act as a constructive critical friend
- Promote reflection to drive continuous improvement

Operational Team

- Support partners in meeting their statutory responsibilities and in developing and implementing the safeguarding arrangements
- Provide administrative and management support to the Partnership including all sub-groups
- Manage, analyse and report on Section 11 audits and support the development and analysis of other audits carried out by the partnership
- Review & develop business planning, forward planning and the learning & development programme